

Siemens PLM Software

NX CAM 11.0.1:

Organize Dialog Groups into Nodes

Creating a flat dialog box structure using explorer nodes.

About NX CAM

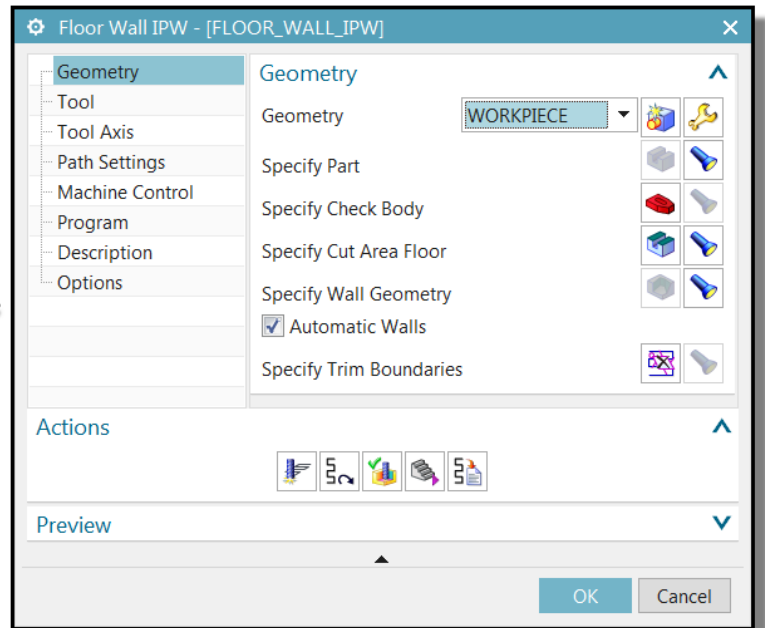
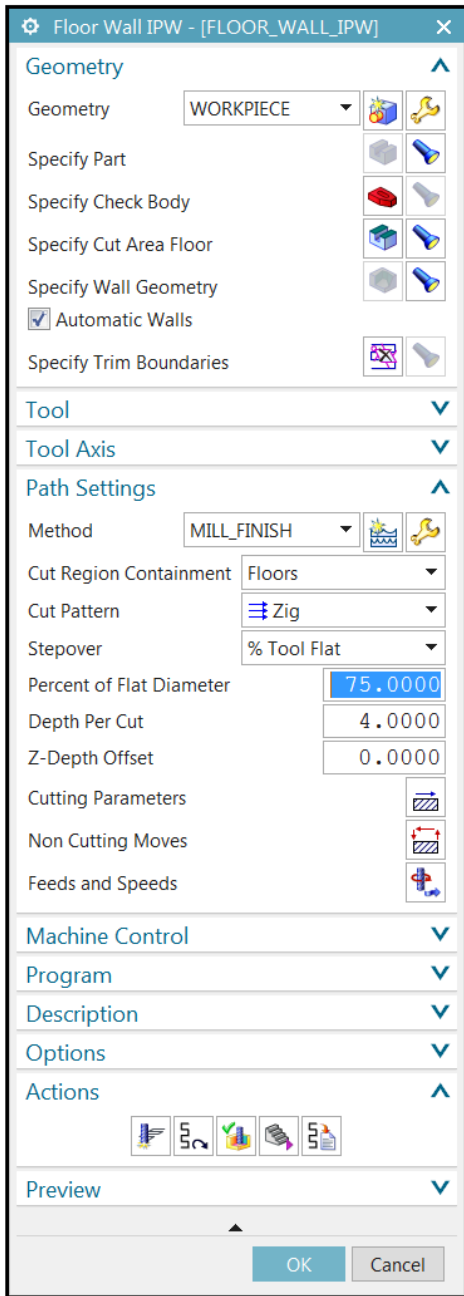
NX™ CAM software has helped many of the world's leading manufacturers and job shops produce better parts faster. You can also achieve similar benefits by making use of the unique advantages NX CAM offers.

This is one of many hands-on demonstrations designed to introduce you to the powerful capabilities in NX CAM 11.0.1. In order to run this demonstration, you will need access to NX CAM 11.0.1.

Visit the [NX Manufacturing Forum](#) to learn more, ask questions, and share comments about NX CAM.

Hands-on Demonstration: Organize Dialog Groups into Nodes

You can now customize dialog boxes using explorer nodes to create a flat structure with groups listed along the left side of the dialog box. This type of organization can eliminate scrolling by reducing the size of large dialog boxes.

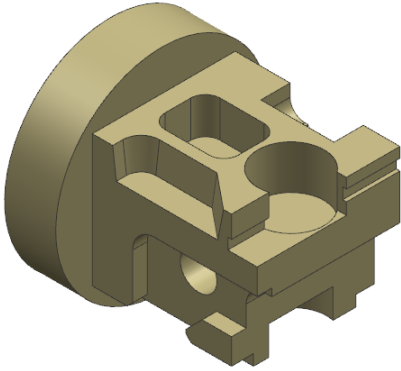


Prerequisites:

1. You will need access to **NX CAM 11.0.1** in order to run this demonstration.
2. If you haven't done so already, download and unzip **organize_dialog_groups.7z**.

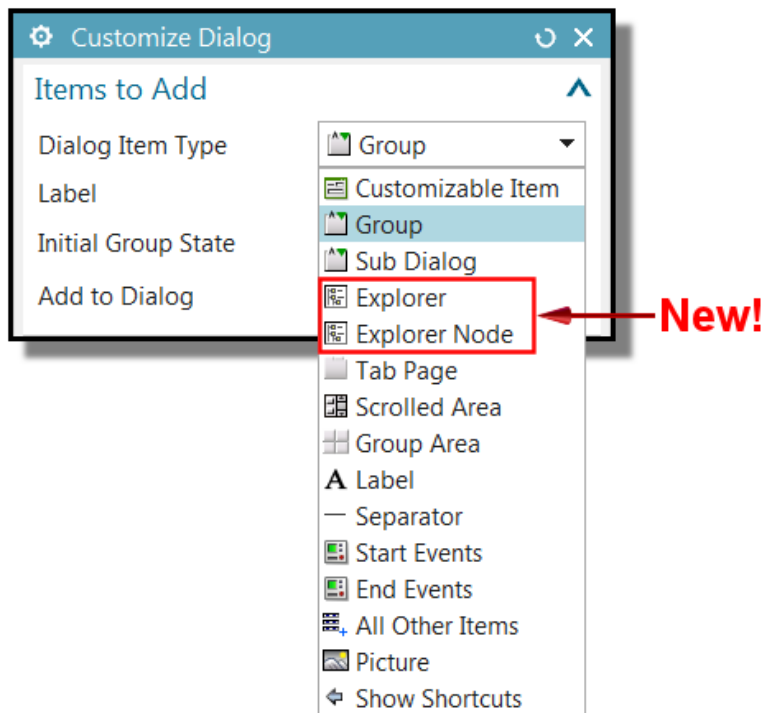
Demo:

1. Open **organize_dialogs.prt** in NX.



2. In the Program Order View of the Operation Navigator, right-click **FLOOR_WALL_IPW** and select **Object→Customize**.

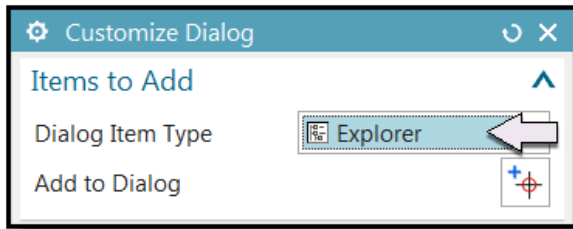
The Dialog Item Type list contains two new options that allow you to organize the dialog box into a flat structure using explorer nodes.



You will begin by adding an explorer tree to the dialog box. You will then add explorer nodes to the tree and move each dialog group into the corresponding explorer node. You will then view the resulting dialog box.

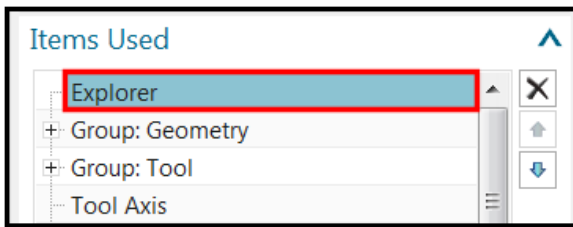
Add an Explorer tree

3. Select **Explorer** from the **Dialog Item Type** list.



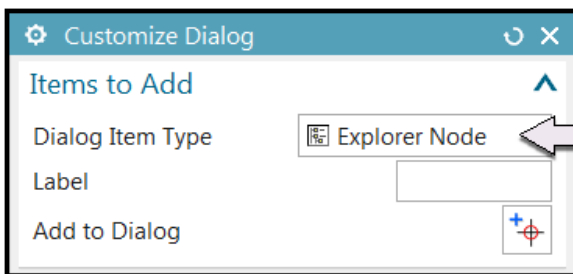
4. Click **Add to Dialog** .

Explorer appears at the top of the Items Used list.

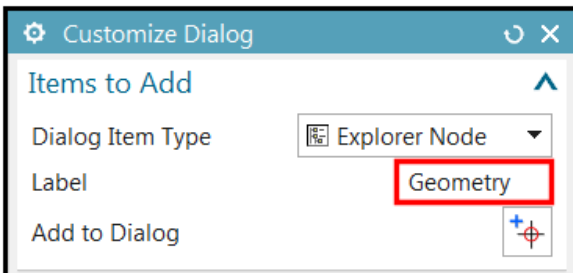


Add nodes to the tree

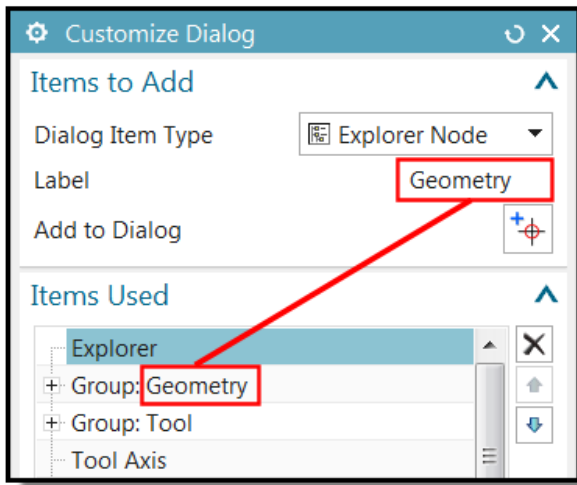
5. With **Explorer** still selected in the **Items Used** list, select **Explorer Node** from the **Dialog Item Type** list.



6. Type **Geometry** in the **Label** box.

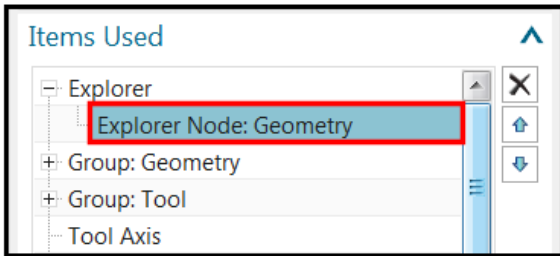


The node label you typed matches the name of the dialog box group that you will move into this node.



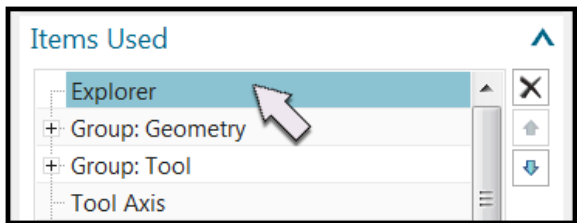
7. Click **Add to Dialog** .

The Geometry node is added to the Explorer tree.



You will now add the remaining nodes to the tree.

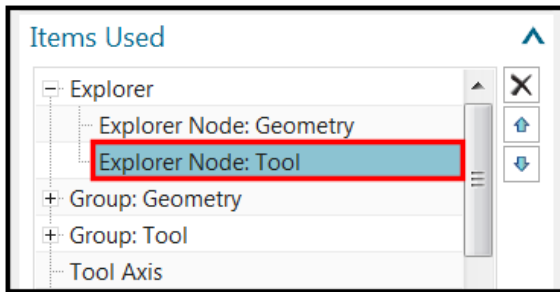
8. Select **Explorer** from the **Items Used** list.



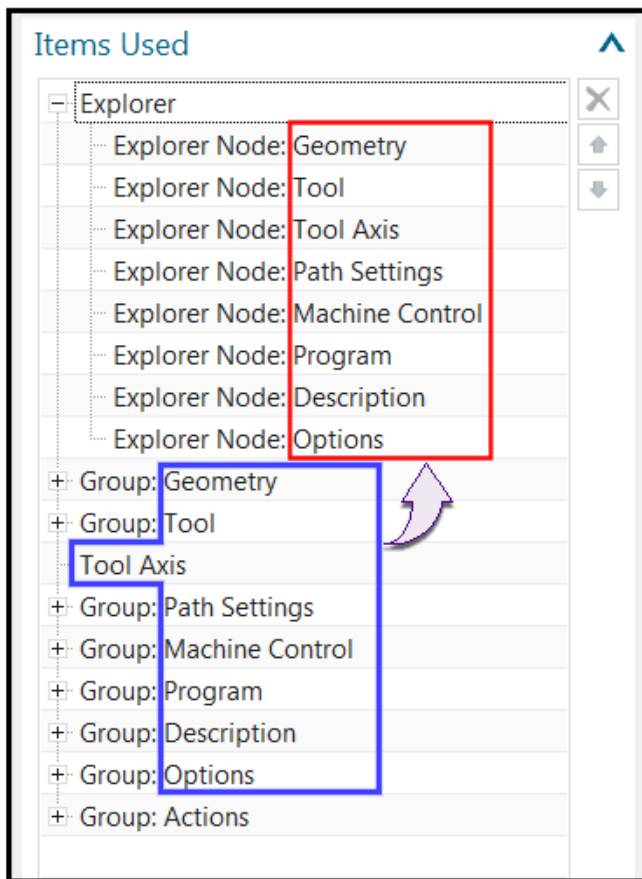
9. Select **Explorer Node** from the **Dialog Item Type** list.
10. Type **Tool** in the **Label** box.

11. Click **Add to Dialog** .

The Tool node is added to the Explorer tree.

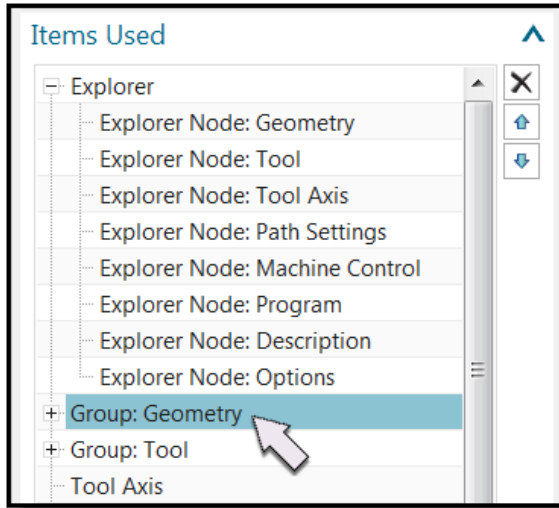


- Repeat steps 8-11 to add the remaining nodes to the tree. Remember, the node labels you type should match the names of the dialog box groups that you will move into the nodes.



Move the groups into the corresponding explorer nodes

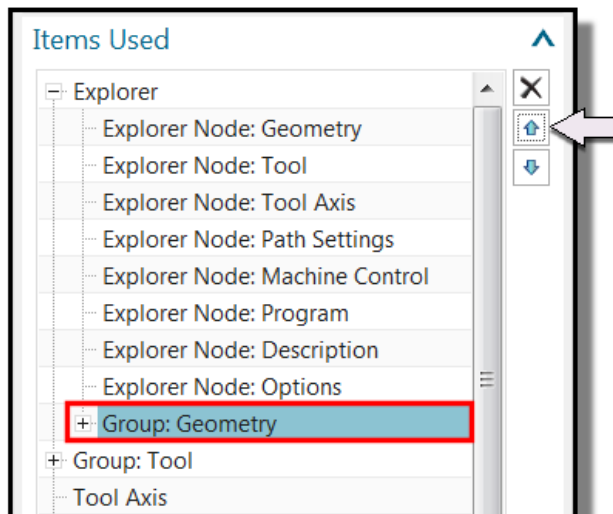
13. In the **Items Used** list, select **Group:Geometry**.




14. Select **Open** from the **Initial Group State** list.

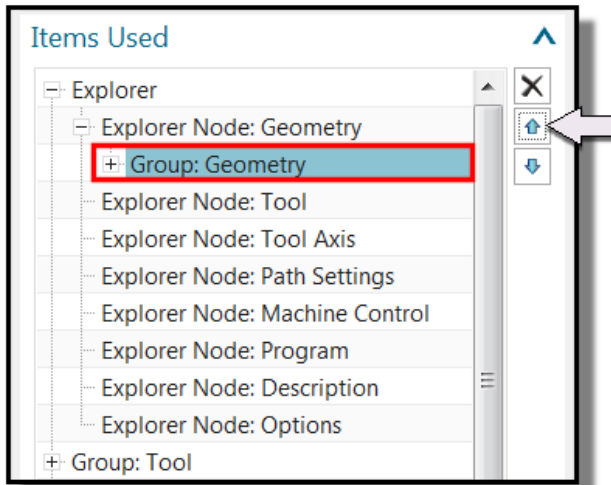
This assures that the group parameters are visible when you select the node in the explorer tree.

15. Click **Move Up**  once.

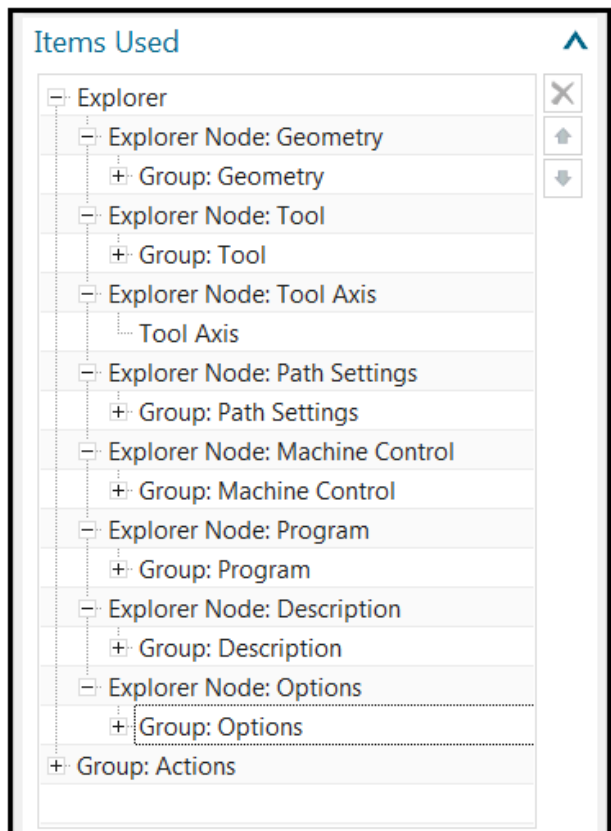


The Geometry group moves into the Explorer tree, but not into the Group:Geometry node. An Alert appears warning you that all items in the explorer tree must be inside an explorer node.

16. Click **Move Up**  until the Geometry group is inside the Geometry node.



17. Repeat steps 13-16 to move each group into the corresponding node. Don't forget to Select **Open** from the **Initial Group State** list for each group you move.

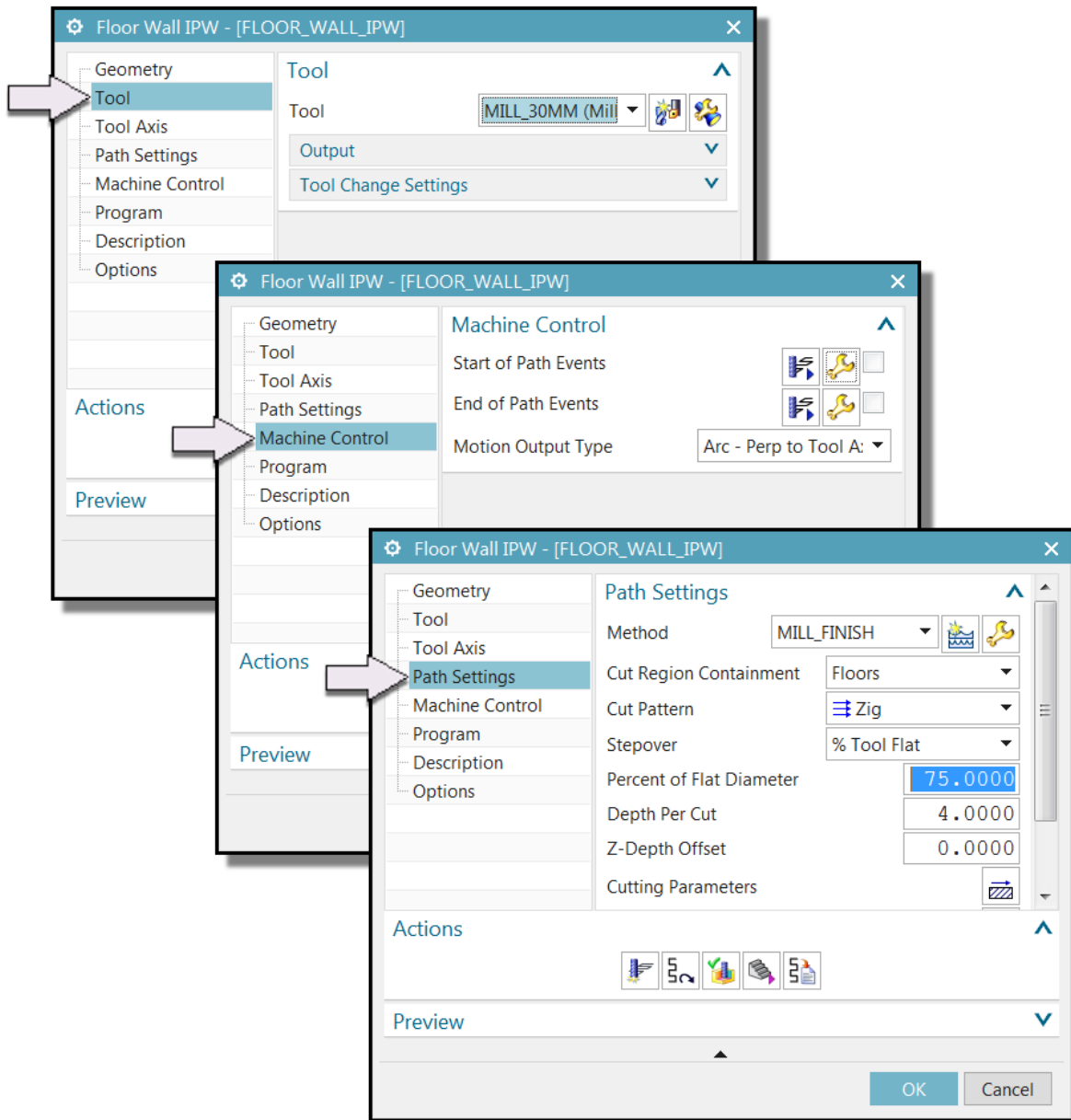


18. Click **OK** to complete the dialog customization.

View the customized dialog box

Now you will view the resulting customized dialog box.

19. In the Operation Navigator, double-click **FLOOR_WALL_IPW** to display the customized dialog box.
20. Select each one of the group names.



21. Click **Cancel**.

22. When you are finished practicing, close the part without saving.

Siemens Industry Software

Headquarters

Granite Park One
5800 Granite Parkway
Suite 600
Plano, TX 75024
USA
+1 972 987 3000

Americas

Granite Park One
5800 Granite Parkway
Suite 600
Plano, TX 75024
USA
+1 314 264 8499

Europe

Stephenson House
Sir William Siemens Square
Frimley, Camberley
Surrey, GU16 8QD
+44 (0) 1276 413200

Asia-Pacific

Suites 4301-4302, 43/F
AIA Kowloon Tower, Landmark East
100 How Ming Street
Kwun Tong, Kowloon
Hong Kong
+852 2230 3308

23.

About Siemens PLM Software

Siemens PLM Software, a business unit of the Siemens Industry Automation Division, is a leading global provider of product lifecycle management (PLM) software and services with seven million licensed seats and more than 71,000 customers worldwide. Headquartered in Plano, Texas, Siemens PLM Software works collaboratively with companies to deliver open solutions that help them turn more ideas into successful products. For more information on Siemens PLM Software products and services, visit www.siemens.com/plm.

© 2016 Siemens Product Lifecycle Management Software Inc. Siemens and the Siemens logo are registered trademarks of Siemens AG. D-Cubed, Femap, Geolus, GO PLM, I-deas, Insight, JT, NX, Parasolid, Solid Edge, Teamcenter, Tecnomatix and Velocity Series are trademarks or registered trademarks of Siemens Product Lifecycle Management Software Inc. or its subsidiaries in the United States and in other countries. All other logos, trademarks, registered trademarks or service marks used herein are the property of their respective holders.